



**Graphic Era**  
Deemed to be University  
DEHRADUN

APPLY NOW



# DEPARTMENT OF NURSING

Programs Offered —

\* B.Sc Nursing (Basic)

BROCHURE 2026-27

# About the University

## A Legacy of Excellence

Founded by Prof. (Dr.) Kamal Ghanshala with a vision to transform youth through quality education, Graphic Era began its journey in 1993 and evolved into Graphic Era Institute of Technology (GEIT) in 1997. In 2008, it was granted Deemed to be University status by the Government of India.

Today, Graphic Era stands as a NAAC 'A+' accredited university, ranked 48th in the University, 52nd in Engineering and 52nd in Management Category by NIRF, Ministry of Education. With 6 NBA-accredited programs, the university fosters an industry-academia partnership through collaborations with Tata Technologies and IBM and hosts a DST-sponsored Technology Business Incubator for startups.

With global academic partnerships and student exchange programs across US, Europe, Australia, and Asia, Graphic Era provides a world-class learning experience. Its alumni shine at Apple, Google, Microsoft, HSBC, TCS, Wipro, Infosys, and the Indian Armed Forces, shaping the future with innovation and excellence.

**Be a part of this legacy!**



## About the Department

The glorious past of Graphic Era College of Nursing is the framework that navigates nursing education and research focusing on quality patient care which indeed fabricates the vision and mission of our Founder Prof (Dr.) Kamal Ghanshala, entrepreneur and a philanthropist who possesses excellent academic credentials.

Graphic Era Educational Society (GEES) is a non-profit organization established in 1993 with the goal of providing world-class education and generating resources for quality education. It recognizes the right of every individual to lead a dignified life in a just and equitable manner. The beginning of Graphic Era College of Nursing was very humble as of any other enterprise, in the year 2019.

### Vision

To be an internationally recognized, inquiry-driven, ethically engaged diverse community, whose members work collaboratively for positive transformation in the world through leadership in teaching, research, and social action.

### Mission

To promote learning in its true spirit by offering knowledge and skills that enable individuals to succeed as professionals. The university aims to distinguish itself as a diverse, socially responsible learning community with high-quality scholarship and academic rigor.



# Key Facts & Achievements

## Rankings

**#48** University Category

**#52** Engineering Category

**#52** Management Category



Source: **NIRF 2025 Ranking**  
Ministry of Education,  
Govt. of India

**#41** Sustainability Rank in India

**#138** Southern Asia 2026

**Diamond**

I-Gauge Rating



**#02** in India for Research Quality

**#601-800**

World University Ranking



World University Rankings 2026

## Startups

**₹500+ Cr**

Valuation of Startup's

**100+**

Incubated Startups

**90+**

Startups Recognised

**1000+**

Interns Enrolled

**8000+**

Beneficiaries in 2025

## Accreditations

**NAAC A+**

Grade Accredited



Source: National Assessment & Accreditation Council (NAAC)

**UGC, AICTE, BCI, NMC, INC**

Programs approved by University Grants Commission (**UGC**), All India Council for Technical Education (**AICTE**), Bar Council of India (**BCI**), National Medical Commission (**NMC**), and Indian Nursing Council (**INC**)



**06 NBA**

Courses Accredited

The only University in the region to have **B.Tech (CSE, ECE, ME, CE, Biotechnology)** and **MBA** accredited by NBA



Source: National Board of Accreditation (**NBA**)

## Academic Snapshot

**900+** Distinguished Faculty Members

**14K+** Students

**22** Departments (8 Engineering & 14 Non-Engineering)

**100+** Programmes

## Research & Innovation

**Top 2%**

34 faculty members of Graphic Era University included in Stanford-Elsevier-list.

**₹2648.99 Lac**

Research Project Funding from leading government agencies including DST, DBT, SERB, CSIR, UCOST, MoEF&CC and ISRO.

**₹3472.17 Lac**

Consultancy Project Funding

**15500+**

Research Publications

**240+**

Patents Granted

**2100+**

Patents Published

# Courses Offered

## B.Sc Nursing (Basic)

Above mentioned course is recognized by the statutory bodies:

Government of Uttarakhand | Uttarakhand Nurses and Midwives Council | The Indian Nursing Council

### Eligibility Criteria —

- The minimum age for admission shall be 17 years on 31<sup>st</sup> December of the year in which admission is sought.
- 10+2 class passed with Science (PCB) & English Core/English Elective from recognized board under AISSCE/ CBSE/ ICSE/ SSCE/ HSCE or other equivalent Board.
- Student shall be medically fit.
- Student shall be admitted once in a year.
- Students appearing in 10+2 examination in Science conducted by National Institute of Open School.

#### For Foreign Nationals

The entry qualification equivalency i.e., 12<sup>th</sup> standard will be obtained by Association of Indian Universities, New Delhi. Institution, State Nursing Council will be responsible to ensure that the qualification and eligibility will be equivalent to what has been prescribed as above.

### Job Roles —

- **Registered Nurse (RN):** Provides patient care in hospitals, clinics, and healthcare centers.
- **Critical Care Nurse:** Works in Intensive Care Units (ICUs) and Emergency Departments.
- **Community Health Nurse:** Engages in public health initiatives, vaccinations, and health awareness programs.
- **Nursing Educator:** Trains future nurses in academic institutions and hospitals.
- **Home Healthcare Nurse:** Provides medical care to patients at home, including elderly and post-surgery care.
- **Occupational Health Nurse:** Works in corporate settings to ensure employee health and workplace safety.
- **Military or Defense Nurse:** Provides medical care in armed forces hospitals and emergency combat zones.

### Industries & Work Sectors —

- Government & Private Hospitals (AIIMS, Apollo, Fortis, Max, etc.)
- Community Health & NGOs (Red Cross, WHO, UNICEF, etc.)
- Research & Clinical Trials (Medical research organizations, drug testing labs)
- Corporate Healthcare (Occupational health and wellness programs)
- Military & Paramilitary Forces (Army, Navy, Air Force medical corps)
- Medical Tourism & Aviation Healthcare (Airlines, cruise ships, travel healthcare) will be equivalent to what has been prescribed as above.

### Higher Studies —

- **M.Sc. Nursing** – Specialization in areas like Medical-Surgical Nursing, Pediatrics, Psychiatry, Obstetrics & Gynecology.
- **MBA in Hospital Administration** – For those interested in managerial roles in healthcare.
- **Postgraduate Diploma in Critical Care Nursing** – Focus on ICU and emergency care.
- **Postgraduate Diploma in Mental Health Nursing** – Specialization in psychiatric nursing.
- **M.Phil & Ph.D in Nursing** – For those who wish to enter research and academics.

### Career Pathways —

A B.Sc in Nursing opens up diverse career opportunities in healthcare, spanning across various sectors. Graduates can secure roles in hospitals, clinics, research institutions, and even non-traditional healthcare settings

# Meet Our Experts

Name	Designation	Qualification
Dr. Amita Shilpa Gottlieb	Principal Cum Professor	B.Sc (Biology), M.Sc Nursing, MBA (Hospital Management), Ph.D (Psychology), Ph.D Obstetrics & Gynaecology Nursing
Mr. Akbar Nawaz	Vice-Principal Cum Professor	M.Sc Nursing
Mr. Sudeep Nath	Associate Professor	M.Sc Nursing
Mrs. Sangita Devi	Associate Professor	M.Sc Nursing
Mrs Abhilasha Kujur	Associate Professor	M.Sc Nursing
Mrs. Priyanka Rana Kamboj	Assistant Professor	M.Sc Nursing
Mrs. Nidhi Rana	Assistant Professor	M.Sc Nursing
Ms. Ngathem Julia Devi	Assistant Professor	M.Sc Nursing
Mrs. Aradhnana Kukreti	Assistant Professor	M.Sc Nursing
Mrs. Deepti Rawat	Assistant Professor	M.Sc Nursing
Mrs. Neha Thakur	Assistant Professor	M.Sc Nursing
Mr. Praveen Kumar Jaiswal	Assistant Professor	M.Sc Nursing
Ms. Puneet Kaur	Nursing Tutor	M.Sc Nursing
Ms. Rashika Badoni	Nursing Tutor	M.Sc Nursing
Mr. Nadeem Parvaiz	Nursing Tutor	M.Sc Nursing
Ms. Kanchan Chaudhary	Nursing Tutor	M.Sc Nursing
Ms. Gurdeep Kaur	Nursing Tutor	B.Sc Nursing
Ms. Yashi Rawat	Nursing Tutor	B.Sc Nursing
Ms. Kanchan Pal	Nursing Tutor	B.Sc Nursing
Mr. Kartik Kala	Nursing Tutor	B.Sc Nursing
Ms. Anjali Chauhan	Nursing Tutor	B.Sc Nursing
Ms. Bhawna Upadhyay	Nursing Tutor	B.Sc Nursing

Name	Designation	Qualification
Ms. Damini Mandal	Nursing Tutor	B.Sc Nursing
Mr. Shalendra Negi	Nursing Tutor	B.Sc Nursing
Mr. Lalu Kumar	Nursing Tutor	B.Sc Nursing
Ms. Anustha Dhall	Nursing Tutor	B.Sc Nursing
Ms. Anjali Kumari	Nursing Tutor	B.Sc Nursing
Ms. Aakriti Rawat	Nursing Tutor	B.Sc Nursing
Mr. Md Faiz	Nursing Tutor	B.Sc Nursing
Ms. Mamta Kumari	Nursing Tutor	B.Sc Nursing
Ms. Mamita Kumari	Nursing Tutor	B.Sc Nursing
Ms. Prity	Nursing Tutor	B.Sc Nursing
Ms Raveena	Nursing Tutor	B.Sc Nursing
Ms. Nikita	Nursing Tutor	B.Sc Nursing
Ms. Kritika Chauhan	Nursing Tutor	B.Sc Nursing
Ms. Geetika Rajput	Nursing Tutor	B.Sc Nursing
Ms. Heena Parveen	Nursing Tutor	B.Sc Nursing
Ms. Simran Sayal	Nursing Tutor	B.Sc Nursing
Ms. Kareena Koranga	Nursing Tutor	B.Sc Nursing
Ms. Deepali Semwal	Nursing Tutor	B.Sc Nursing
Ms. Sadhana	Nursing Tutor	B.Sc Nursing
Ms Sakshi Bhatt	Nursing Tutor	B.Sc Nursing
Ms. Tanuja	Nursing Tutor	B.Sc Nursing
Mr. Ashwani Rana	Nursing Tutor	B.Sc Nursing

**1:10**

Faculty-student ratio maintained, in accordance with Indian Nursing Council norms

# Research & Achievements

Graphic Era College of Nursing, a constituent of Graphic Era (Deemed to be University), has established itself as a beacon of excellence in nursing education, research, and innovation. The institution is dedicated to advancing healthcare through cutting-edge research, state-of-the-art laboratories, and fostering a culture of innovation among its faculty and students.

## Research Laboratories & Innovations

The College of Nursing boasts advanced research facilities designed to support a wide range of studies in nursing and healthcare. These laboratories are equipped with modern technology to facilitate research in areas such as patient care, community health, and medical technologies. The institution emphasizes interdisciplinary collaboration, encouraging nursing researchers to work alongside experts in biotechnology, medical sciences, and engineering to develop innovative solutions to healthcare challenges.

## Awards & Patents

Graphic Era's dedication to research excellence is evident in its impressive portfolio of patents and awards. The university has published over 500 patents, with several granted, reflecting its strong emphasis on innovation. These patents span various fields, including healthcare, where faculty members have made significant contributions.

## Research Opportunities for Students

The College of Nursing is committed to nurturing the next generation of healthcare researchers. Students are encouraged to engage in research projects that address contemporary healthcare issues. The institution offers various programs and workshops to enhance research skills among students.

Additionally, the university's Research & Development Cell facilitates and encourages research culture among faculty and students. It provides consultancy services, assists in securing research grants, and promotes participation in conferences, seminars, and workshops. This support system enables nursing students to undertake interdisciplinary research projects, often in collaboration with other departments, thereby broadening their research horizons.

Graphic Era College of Nursing stands at the forefront of nursing education and research, with its advanced laboratories, innovative projects, recognized patents, and robust support for student research. The institution's unwavering commitment to excellence ensures that its graduates are well-equipped to contribute significantly to the healthcare sector.



# Facilities and Infrastructure

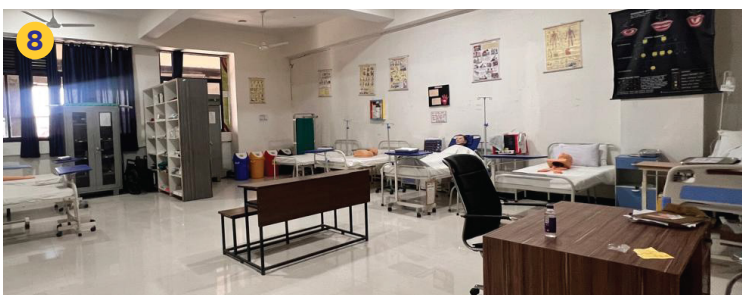
Graphic Era College of Nursing, a premier department of Graphic Era (Deemed to be University), is located in a dedicated building in the serene city of Dehradun, Uttarakhand. Nestled between Rajaji National Park and Clement Town Cantonment, the campus provides a picturesque and conducive setting for academic growth.

The college offers state-of-the-art infrastructure, including modern classrooms, advanced laboratories, and access to cutting-edge medical equipment, ensuring holistic nursing education. It maintains a 1:10 faculty-student ratio as per Indian Nursing Council norms, with experienced faculty providing quality instruction and mentorship.

Beyond academics, the campus fosters a vibrant and inclusive environment with cultural festivals, sports events, and student-led clubs that promote overall development.

With its blend of modern facilities, expert faculty, and scenic surroundings, Graphic Era College of Nursing is an ideal destination for aspiring nursing professionals seeking excellence in both education and experience.





**1. Pre-Clinical Sciences Lab:**

Anatomical models, specimens, and digital resources for human body learning.

**2. Audio-Visual Aids Room:**

Educational DVDs and multimedia tools.

**3. Child Health Nursing Lab:**

Pediatric mannequins, resuscitation kits, phototherapy units for newborn care and emergency simulations.

**4. Computer Lab:**

Internet-enabled systems for research and e-learning. Wi-Fi: Campus-wide access.

**5. Critical Care & Simulation Lab:**

High-fidelity mannequins and life-support systems for emergency care training.

**6. Library:**

Nursing textbooks, journals, digital databases, e-books, study areas, and research support.

**7. Community Health Nursing Lab & Nutrition Lab:**

Community bags, rural health simulations, kitchen setup for diet prep.

**8. Fundamentals of Nursing Lab:**

Hospital beds, mannequins, equipment for basic nursing skills.

**9. Obstetrics & Gynaecology Lab:**

Delivery beds, simulators, monitoring tools for maternal and neonatal care.

# Student Opportunities & Placement

Graphic Era College of Nursing, a part of Graphic Era (Deemed to be University), is dedicated to shaping compassionate, knowledgeable, and skilled healthcare professionals. The institution offers a comprehensive B.Sc Nursing program that combines rigorous academic instruction with extensive practical training, ensuring students are well-prepared to excel in the dynamic field of healthcare.

## Internship Opportunities at Graphic Era Hospital

A significant advantage for nursing students at Graphic Era is the partnership with the 900-bedded Graphic Era Hospital. This collaboration provides students with hands-on clinical experience in a real-world healthcare setting. Working alongside experienced medical professionals, students gain exposure to advanced medical equipment and technologies, enhancing their clinical skills and knowledge. This practical training is integral to developing competent healthcare practitioners ready to meet the challenges of modern medicine.



## Placement Opportunities

Graphic Era has a strong track record of student placements across top multinational corporations globally. The university's dedicated placement team works tirelessly to match the best opportunities with the right candidates, resulting in consistently high placement rates. Specialized placement training and preparation are provided from the outset of the program, ensuring students are well-equipped to succeed in competitive selection processes.

## Our Alumni

Graphic Era College of Nursing takes immense pride in its alumni, whose achievements and contributions have significantly impacted the healthcare sector. Their dedication, expertise, and compassion exemplify the high standards of education and training imparted by the institution.

### Alumni Achievements

Graduates of Graphic Era College of Nursing have established themselves as competent professionals in various healthcare settings, both nationally and internationally. Their roles span across clinical practice, healthcare administration, research, and education, reflecting the comprehensive curriculum and experiential learning they received during their tenure at the college.

### Stakeholder Appreciation

The success of our alumni is a testament to the collaborative efforts of various stakeholders, including faculty members, administrative staff, clinical partners, and the broader community. Their unwavering support and commitment have been instrumental in shaping the careers of our graduates.

### Alumni Testimonials

Our alumni frequently express their gratitude towards the institution for providing a solid foundation in nursing education. They commend the college for its state-of-the-art facilities, experienced faculty, and the emphasis on holistic development, which have collectively prepared them to excel in their professional journeys.

The accomplishments of the alumni of Graphic Era College of Nursing stand as a beacon of the institution's dedication to excellence in nursing education. The college remains committed to supporting its graduates and celebrating their successes, which continue to inspire current and future students.

# Global Connections

Graphic Era College of Nursing is dedicated to prepare students for global healthcare careers through international exposure and opportunities.

## Study Abroad Programs

The college offers study abroad programs that allow students to experience diverse educational systems and healthcare practices. These programs enable students to broaden their perspectives, understand global health challenges, and adapt to different cultural contexts. Participating in such programs enhances students' competencies and makes them more competitive in the international job market.

## International Placement Opportunities

Graphic Era University has a strong placement ecosystem that excels in various aspects of higher education, including student performance, academic rigor, and specialized placement preparation. The dedicated placement team works to bridge opportunities with the right candidates, resulting in successful placements both nationally and internationally.

## Interactive Sessions with International Agencies

To further prepare students for global opportunities, the college organizes interactive sessions with international agencies and clinics.

For instance, sessions with organizations like Taurus Clinic in Hannover, Germany, provide students with insights into international healthcare systems, expectations, and the process of securing placements abroad. These interactions are invaluable in helping students navigate the complexities of international employment and understand the qualifications required for various roles.

## Language and Cultural Preparation

Understanding the importance of language proficiency and cultural competence in international settings, Graphic Era College of Nursing offers foreign language courses and cultural orientation programs. These initiatives equip students with the necessary communication skills and cultural awareness to effectively integrate into healthcare teams worldwide.

Through these comprehensive efforts, Graphic Era College of Nursing ensures that its graduates are well-prepared to seize international opportunities and contribute meaningfully to global healthcare.

## Awards and Recognitions

Graphic Era College of Nursing is accredited by the Indian Nursing Council (INC), reflecting our commitment to quality education and adherence to national standards. Our experienced faculty includes INC-recognized educators, with some serving as experts on the State Medical Service Selection Board and master trainers for midwife training.

Faculty also collaborate with the Institute of Liver and Biliary Sciences for the Hepatitis B control program, offering students hands-on public health training.

We are expanding our academic offerings with upcoming M.Sc. and Ph.D. Nursing programs to promote research and specialization.



# Student Life and Activities

Student life at Graphic Era College of Nursing blends academics with enriching experiences. The Student Nurses Association conducts seminars and workshops, while observance of health days like World AIDS Day promotes awareness. Students engage in community outreach, health camps, and clinical postings at institutions like the Institute of Mental Health, Amritsar. Events like Nurses Day, the Oath Ceremony, and farewells foster belonging. Internships at Graphic Era Hospital and educational visits to INC, TNAI, and public health sites enhance practical exposure.



# Career Counseling Services

The college offers robust career counseling to guide students in making informed decisions about their professional paths. Experienced counselors provide personalized guidance, helping students identify their strengths, interests, and career goals. Services include resume building, interview preparation, and job search strategies, ensuring that graduates are well-prepared to enter the competitive healthcare industry.



## Scholarships and Financial Aid

---

Understanding the financial challenges that students may face, Graphic Era College of Nursing provides various scholarships and financial aid programs to support deserving candidates:

### Academic Scholarships

Awarded based on merit, these scholarships recognize students' academic achievements and provide financial assistance to encourage continued excellence.

### Sibling Concession

To support families, the college offers a **7.5%** concession on net tuition fees for immediate siblings of current students and a **5%** concession for siblings of alumni from any Graphic Era institution.

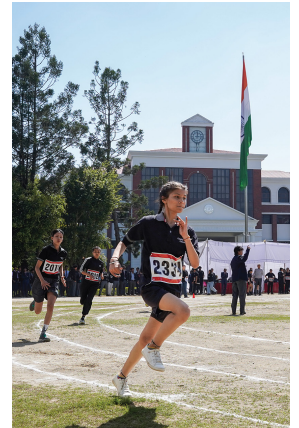
These financial aid options are designed to make quality education accessible and affordable, enabling students to focus on their studies without undue financial burden.





# Beyond Classrooms

Where Every Event Tells a Story



Join us in 2026!



## Career Counselling Services

Graphic Era College of Nursing equips students with the guidance, skills, and opportunities needed for career success. Our Career Counseling and Professional Development Services prepare them for every stage of their professional journey.

### Domain-Specific Mentorship

We have dedicated Chair Heads for Marketing, Finance, and Human Resources, providing students with:

- Expert Mentorship
- Counseling Support

### Professional Development Program (PDP)

### Placement Support

Our Placement Department plays a vital role in shaping students' careers by providing:

- Support for Summer Internships (SIP) and Final Placements
- Internship Guidance

### Alumni Mentorship

## Graphic Era Common Entrance Test (GECET)

Scholarship upto

₹ **100** Cr 

Unlock up to 100% scholarships with GECET – Graphic Era Common Entrance Test.

Secure your admission & financial support for a brighter future!

Apply Now – [gecet.geu.ac.in](http://gecet.geu.ac.in)



## Scholarships & Support Benefits

Upto

 **100%** Scholarship based on 12th or UG marks

 **10%** Scholarship to the Girl Candidates

 **05%** Scholarship to the children of Defense Personnel


 **05%** Scholarship to the Sport Person (National Level)

 **7.5%** Current Sibling Student Scholarship


 **05%** Passed out Sibling Student Scholarship


 **10%** Alumni Loyalty Scholarship


 **10%** Single Parent Scholarship (COVID Case)

 **05%** Single Parent Scholarship (Normal Case)

 **05%** Yearly Payment of Fees

 All students are covered under a comprehensive health insurance plan.

 Medical services are provided through the state-of-the-art Graphic Era Hospital.

 Student loan facilities are available to support financial needs.

## Student Facilities & Engagement



Well-equipped and comfortable hostel facilities



Efficient transportation services



Extensive sports facilities



Free student uniform



Vibrant student clubs and extracurricular activities



Multiple hygienic and student-friendly cafeterias



Green, eco-friendly campus environment



ICT-enabled smart classrooms



# Graphic Era

Deemed to be University  
DEHRADUN

## GET IN TOUCH

Tollfree —  
1800 270 1280, 1800 890 6027

WhatsApp —  
(+91) 70881 19995

Website —  
[www.geu.ac.in](http://www.geu.ac.in)

E-mail —  
[admissions@geu.ac.in](mailto:admissions@geu.ac.in)

Campus —  
Bell Road, Clement Town, Dehradun, Uttarakhand, India 248002

